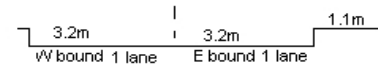
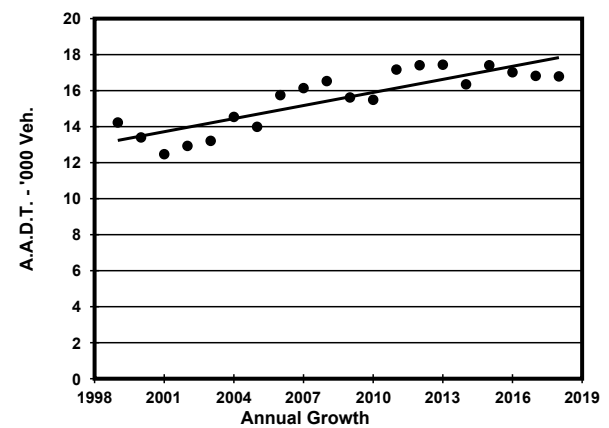
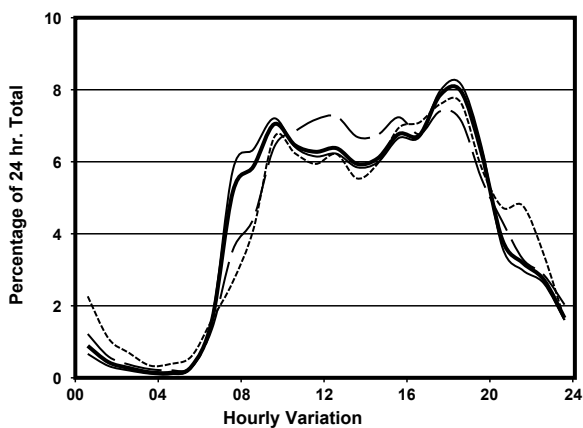
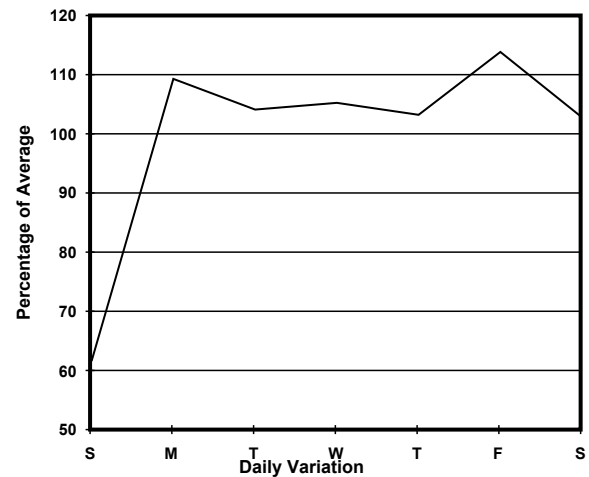
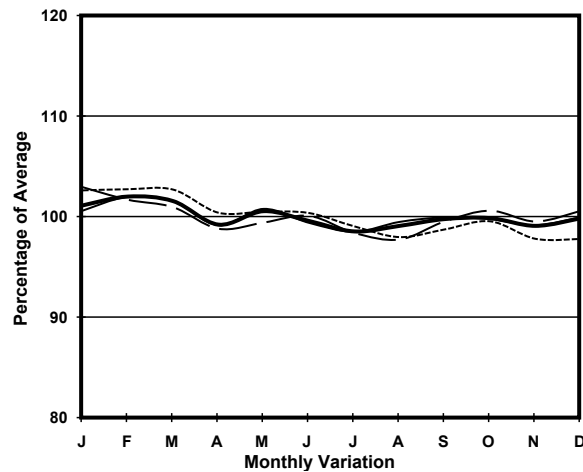


YEAR 2018  
 COVERAGE (B) STATION 2205  
 ROAD NETWORK MAJOR  
 ROAD TYPE DISTRICT DISTRIBUTOR

LINK MAGAZINE GAP RD (from GARDEN RD to PEAK RD)



## 1. TRAFFIC FLOW VARIATION AND GROWTH



— All day — Mon.- Fri. ..... Sat. - - - - Sun.

## 2. TRAFFIC CHARACTERISTICS (BY DIRECTION)

Parameter	All - Day	Mon. - Fri.	Sat.	Sun.
<b>EAST BOUND</b>				
A.A.D.T.	8720	9500	9210	5610
R 12 / 24 - %	77.3	77.9	77.4	72.2
R 16 / 24 - %	94	94.6	93.1	91
AM Peak Hour	0900-1000	0900-1000	0900-1000	0900-1000
One-way flow at AM peak hour	600	660	620	360
T - % (AM)	-	0.5	-	-
PM Peak Hour	1800-1900	1800-1900	1700-1800	1700-1800
One-way flow at PM peak hour	690	790	660	420
T - % (PM)	-	1.7	-	-
Prop.of commercial vehicles - 16 hr.	-	1.2	-	-
<b>WEST BOUND</b>				
A.A.D.T.	8070	8870	8410	4970
R 12 / 24 - %	79.9	81.1	78	73.2
R 16 / 24 - %	95.1	95.6	94.3	91.9
AM Peak Hour	0900-1000	0900-1000	0900-1000	0900-1000
One-way flow at AM peak hour	590	670	510	350
T - % (AM)	-	1.2	-	-
PM Peak Hour	1700-1800	1700-1800	1800-1900	1800-1900
One-way flow at PM peak hour	670	760	660	430
T - % (PM)	-	1.7	-	-
Prop.of commercial vehicles - 16 hr.	-	2.4	-	-

## 3. OTHER INFORMATION AND COMMENT

**4. Vehicle classification and occupancy - Monday to Friday**

Time		Class of vehicle									
		Motor Cycle	Private Car	Taxi	Private LB	PLB	Goods veh.		Non Fr. Bus	Fr. Bus	
							Light	M & H		SD	DD
0700-0800	Pro	0.0	44.2	39.2	3.5	2.5	2.0	0.0	8.5	0.0	0.0
	Ocp	0.0	1.7	2.4	5.7	15.4	2.3	0.0	11.9	0.0	0.0
0800-0900	Pro	2.2	62.3	28.0	0.4	1.5	4.1	0.0	1.5	0.0	0.0
	Ocp	1.0	1.5	2.6	1.0	15.0	2.4	0.0	7.8	0.0	0.0
0900-1000	Pro	1.7	60.9	29.5	0.0	0.6	6.5	0.0	0.9	0.0	0.0
	Ocp	1.2	1.5	2.5	0.0	15.0	1.8	0.0	3.0	0.0	0.0
1000-1100	Pro	1.4	61.4	24.9	0.0	0.7	10.9	0.0	0.7	0.0	0.0
	Ocp	1.0	1.6	2.1	0.0	16.0	1.5	0.0	5.0	0.0	0.0
1100-1200	Pro	3.5	58.3	24.7	1.4	1.4	9.2	0.4	1.1	0.0	0.0
	Ocp	1.1	1.4	2.1	2.0	8.8	1.6	2.0	1.7	0.0	0.0
1200-1300	Pro	2.2	59.9	24.3	0.4	1.5	9.0	0.8	1.9	0.0	0.0
	Ocp	1.2	1.5	2.2	2.0	7.3	1.5	2.0	3.4	0.0	0.0
1300-1400	Pro	0.5	56.7	31.3	0.5	1.0	7.2	0.0	2.9	0.0	0.0
	Ocp	1.0	1.5	2.1	1.0	5.0	1.3	0.0	3.0	0.0	0.0
1400-1500	Pro	1.6	59.8	27.1	0.0	1.2	8.6	0.4	1.2	0.0	0.0
	Ocp	1.0	1.5	2.1	0.0	15.0	1.8	2.0	3.3	0.0	0.0
1500-1600	Pro	0.8	59.8	27.0	0.8	1.6	7.0	0.0	3.1	0.0	0.0
	Ocp	1.0	1.6	2.4	10.0	10.8	1.7	0.0	5.6	0.0	0.0
1600-1700	Pro	1.3	63.7	22.8	0.6	1.6	7.4	0.0	2.6	0.0	0.0
	Ocp	1.0	1.7	2.5	2.0	14.4	1.8	0.0	7.4	0.0	0.0
1700-1800	Pro	0.9	58.2	34.6	0.0	1.2	4.2	0.0	0.9	0.0	0.0
	Ocp	1.0	1.6	2.9	0.0	11.0	1.8	0.0	17.3	0.0	0.0
1800-1900 Peak hour	Pro	3.6	63.8	28.8	0.0	1.5	1.2	0.0	1.2	0.0	0.0
	Ocp	1.1	1.7	2.3	0.0	15.4	1.8	0.0	11.8	0.0	0.0
1900-2000	Pro	1.9	72.2	24.3	0.0	0.6	0.3	0.0	0.6	0.0	0.0
	Ocp	1.0	1.5	2.5	0.0	11.5	2.0	0.0	10.5	0.0	0.0
2000-2100	Pro	1.1	57.8	37.8	0.0	1.1	1.1	0.0	1.1	0.0	0.0
	Ocp	1.5	1.6	2.5	0.0	11.0	1.5	0.0	11.0	0.0	0.0
2100-2200	Pro	0.0	56.9	37.1	0.9	2.6	2.6	0.0	0.0	0.0	0.0
	Ocp	0.0	1.5	2.6	2.0	7.7	2.0	0.0	0.0	0.0	0.0
2200-2300	Pro	2.8	54.5	38.5	0.7	2.1	1.4	0.0	0.0	0.0	0.0
	Ocp	1.3	1.5	2.4	2.0	9.0	1.0	0.0	0.0	0.0	0.0
16 hours	Pro	1.7	60.3	29.0	0.5	1.3	5.4	0.1	1.7	0.0	0.0
	Ocp	1.1	1.6	2.4	4.0	12.0	1.7	2.0	7.8	0.0	0.0

**Legend**

**Pro.** Proportion of vehicles in % (Sum may not add up to 100% due to figure rounding)\*

**Ocp.** Average occupancy of vehicles including both driver and passengers\*

**M&H** Medium and Heavy

**\*** All traffic data are collected from combined bounds except for one way traffic